



# PERCENT *for* ART

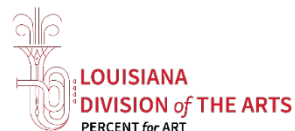
## CALL FOR ARTISTS

**NORTHWESTERN STATE UNIVERSITY  
ALOST HALL**

INDOOR AND/OR OUTDOOR INSTALLATION(S)



This opportunity is possible through the Louisiana Percent for Art program, which is administered by the Office of Cultural Development - Division of the Arts in the Department of Culture Recreation and Tourism of the State of Louisiana, in collaboration with the Division of Administration and the Office of Facility Planning and Control.



# ARTIST OPPORTUNITY: CALL FOR ARTISTS

## OVERVIEW

The [Louisiana Percent for Art Program](#) seeks qualifications from artists or artist teams for a site-specific public artwork at Alost Hall, [Northwestern State University](#)'s new primary academic building in Natchitoches, LA. Alost Hall serves as a central hub for general education and houses programs in the arts and sciences, mathematics, and nursing, welcoming students from every major as they begin their academic journeys. The building reflects the university's commitment to student success, interdisciplinary learning, and community engagement, and offers a unique opportunity for an artwork that speaks to shared experiences, place, and growth.

This is a request for qualifications. Proposals are not required at this stage.

## ELIGIBILITY

This is a **national call** open to professional artists and artist teams (age 18+) with demonstrated experience in public art and large-scale installations. Applicants must have a proven ability to execute projects of similar scale, complexity, and visibility.

Artist teams must designate a lead contact. **Artists are limited to one submission, whether applying individually or as part of a team.**

All submitted work must be original and completed within the past ten years. The Louisiana Percent for Art Program does not discriminate based on race, color, religion, national origin, gender identity, military status, sexual orientation, marital status, or physical ability.

The application, including all examples of work and supporting documents, is considered the artist's official "submission." If any information submitted by the artist or artist's representative, including all supporting documents, is found fraudulent, the submission will be disqualified.

## BUDGET

The proposal selected by the selection committee will include an all-inclusive budget of **\$264,000** to cover all costs associated with the project and commensurate with the intended scale, including but not limited to research, professional consultations, formal reports from licensed structural and electrical engineers where appropriate, a long-term care and maintenance report from a licensed professional conservator, materials, fabrication, transportation, travel, insurance, foundation, lighting, installation, and photography and documentation of the artwork.

## BACKGROUND

Alost Hall is a newly constructed, three-story, 73,149-square-foot academic building on Northwestern State University's Natchitoches campus. The facility is situated on the former site of Caddo Hall, a 1960s residential

facility that was razed in preparation for the new building. Alost Hall replaces John S. Kyser Hall, constructed in 1968, as the university's primary academic building.

Designed as a central hub for general education, Alost Hall houses the Department of English, Languages, and Cultural Studies; the Department of Mathematics; and the College of Nursing and School of Allied Health. The building includes modern classrooms, simulation labs, collaboration spaces, a café, an auditorium, and a multi-purpose area that supports community engagement. Faculty offices for the departments housed in the building, as well as the Dean of the College of Arts and Sciences, are also located here.

Students of all majors pass through Alost Hall, as much of the university's general education curriculum, including courses in biology, physics, and fine arts, is taught within the building. As a result, Alost Hall is a highly trafficked and shared space that reflects the academic foundation of the university and the collective experience of its students.

The building is named for Dr. Robert Alost, a transformative president of Northwestern State University during the 1980s and 1990s. Behind Alost Hall lies a wetlands area, an important feature of the campus and a distinctive element of the surrounding landscape.

## ARTWORK SCOPE AND GOALS

The selection committee envisions an artwork that reflects Northwestern State University's campus history and regional identity while emphasizing the foundational role of general education in every student's academic journey. Rather than centering on a single discipline, the artwork should speak to the shared experience of learning and growth that begins in Alost Hall.

Artists are encouraged to consider conceptual connections between the adjacent wetlands and the life of the campus. The wetlands may serve as inspiration for themes of resilience, interdependence, and sustainability, echoing the ways in which general education supports and nurtures students across all fields of study.

At this stage, both interior and exterior locations remain open for consideration. Artists are invited to respond creatively to the building, its users, and its broader environmental, architectural, and cultural context.

## SUBMISSION REQUIREMENTS

Application materials must be received by **April 27, 2026**, via the **Call for Entry (CaFÉ) system available online at [www.callforentry.org](http://www.callforentry.org)**. **Deadlines in CaFÉ are at 11:59 PM Mountain Time Zone** [Denver, Colorado, USA] on the deadline day. **The application can be accessed [HERE](#).**

The CaFÉ system will remain open until 11:59 PM MDT on April 27<sup>th</sup>. Staff will only be available for technical or website assistance Monday – Friday from 8:30 AM – 5:00 PM MDT (*Holidays may affect this time*). **Applicants are encouraged to apply early to reduce the risk of technical difficulties.**

A complete application must include the following:

- **Artist résumé** demonstrating at least five (5) years of professional visual art experience (**NOT STUDENT WORK**). If submitting as a team, a current résumé should be submitted for each team member (compiled into one document). A biography will not be accepted in place of a résumé.
- A **Letter of Interest** making a brief statement (no more than one page) outlining your interest in the project, artistic vision, and how your work relates to the project goals.
- **References** with the names and current contact details of **three** people you have previously partnered with, worked with, or commissioned your work.  
*References will be contacted for artists invited to develop a proposal for the commission.*
- **Images (up to 10)** of your **original completed** commissions or artworks, not proposals, which demonstrate your ability to create large-scale exterior installations. 3-D models, sketches, or drawings will not be accepted. **You must include the title, medium, dimensions, project budget (price), year completed, location, and description.** The value must be indicated in US dollars.
- Up to 3 **videos** (optional) of work examples

Image specifications: JPG, PNG - Maximum size per image 5MB, total 30MB.

\*Slides, emailed prints, or any physical submissions will NOT be accepted.

## SELECTION PROCESS & EVALUATION CRITERIA

A Selection Committee comprised of a project manager from the Louisiana Office of Facility Planning & Control, the building architect or design professionals, representatives from the facility, professional artist(s), and a member or members of the State Arts Council will review the submitted qualifications. The committee will shortlist a group of finalists, who will then be invited to submit a detailed proposal for the project.

Submissions are evaluated by:

- Appropriateness of the artist's medium, style, and previous experience as they relate to the project goals and setting
- Experience with projects of a similar scale and scope
- Ability to create site-specific or site-reactive works
- Availability to participate in the design and implementation of the project as required
- Special consideration will be given to Louisiana artists as defined by La. R.S.25:9000.1(E)

## NOTIFICATIONS

**All applicants will be notified of their status once the review process is complete.** A full timeline will be provided to those finalists who have been shortlisted. Applicants may receive periodic updates via email as the review progresses.

Finalists will be required to attend two (2) meetings: A site visit to meet with the selection committee and to view the space and the presentation of the artist's proposal before the selection committee.

**An honorarium of \$1,500 will be paid to artists to offset expenses associated with the development of proposals and travel.**

---

NOTE: *"The Percent for Art Program and the Artist Selection Committee reserves the right to change, modify, or revise the Call to Artists, in part or whole, at any time before the submittal deadline without prior notice. Any change, modification or revision can be found [here](#). The Percent for Art Program and the Artist Selection Committee also reserves the right to reject any or all applications or proposals, to reject any finalist, or to terminate the selection process for any project without prior notice."*

The Louisiana Percent for Art Program was established by law in the 1999 legislative session. The law specifies that on projects using more than \$2,000,000.00 in state funds, one percent (1%) of the expenditure for construction or renovation of a state building shall be for works of art by artists and craftsmen for the building or its grounds.

---

Please direct questions about the Percent for Art Program or this project to:

**Scott Finch**, *Director*

Phone: 225-342-8176 Email: [sfinch@crt.la.gov](mailto:sfinch@crt.la.gov)

**April Baham**, *Assistant Director*

Phone: 225-342-6083 Email: [abaham@crt.la.gov](mailto:abaham@crt.la.gov)



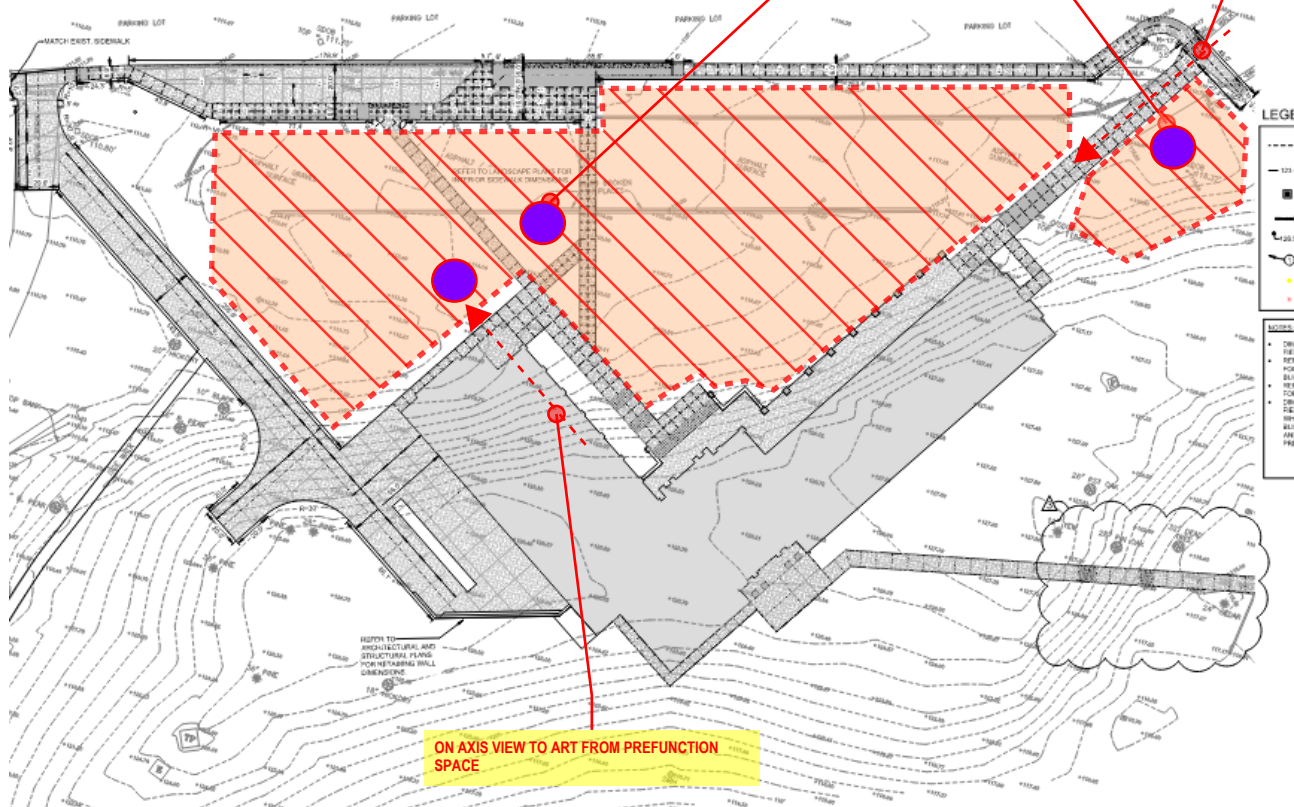
# POSSIBLE ART LOCATIONS FOR ROBERT ALOST HALL



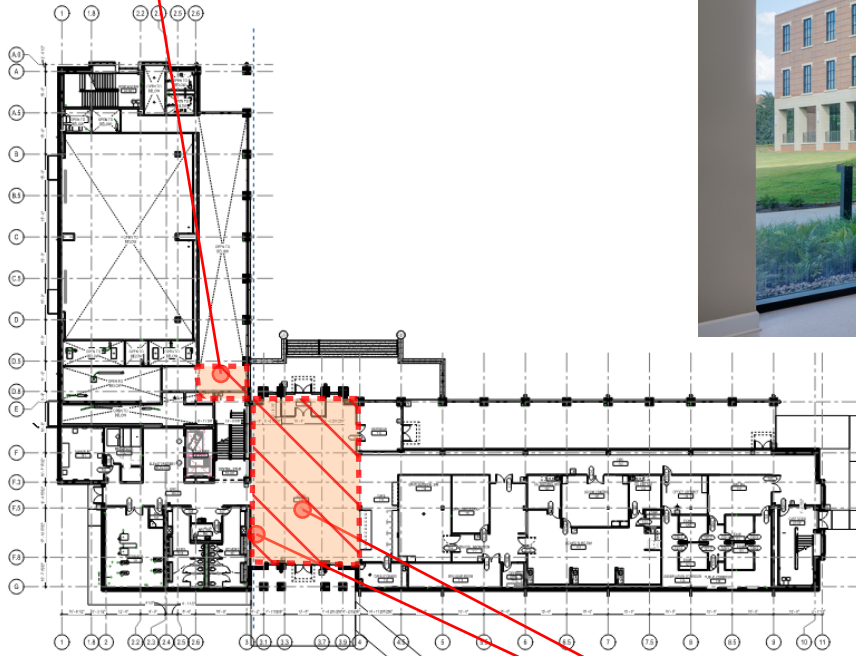
= POSSIBLE POINTS OF INTEREST

EXTERIOR OPPORTUNITIES:  
THE FRONT YARDS MAY PRESENT A SCULPTURAL  
OPPORTUNITY

MAIN PEDESTRIAN  
PATH FOR STUDENTS



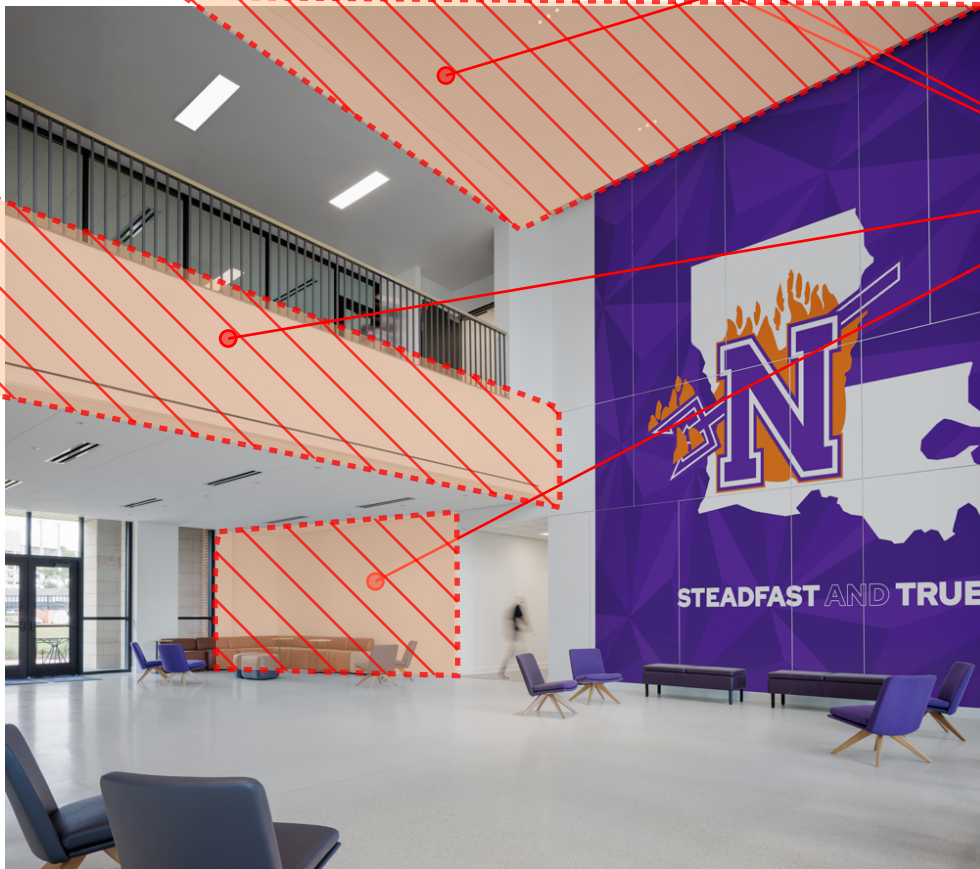
INTERIOR; PREFUNCTION AREA AT GRADE LEVEL



1 OVERALL FLOOR PLAN - LEVEL 01



A CENTRAL HANGING SCULPTURAL PIECE OF ART COULD BE HUNG FROM STRUCTURE; HOWEVER, THERE WOULD NEED TO BE ADDITIONAL ENGINEERING CONFORMATION AND POSSIBLE ADDITIONAL STRUCTURAL AGMENTATION TO SUPPORT IT THAT WOULD NEED TO BE DONE.



INTERIOR: BULKHEAD FACE AT MAIN LOBBY OR ANY OTHER LARGE CURRENTLY UNADORNED WALL SPACE; SCUPTURE ON LOBBY FLOOR MIGHT BE ACCEPTABLE AS WELL.